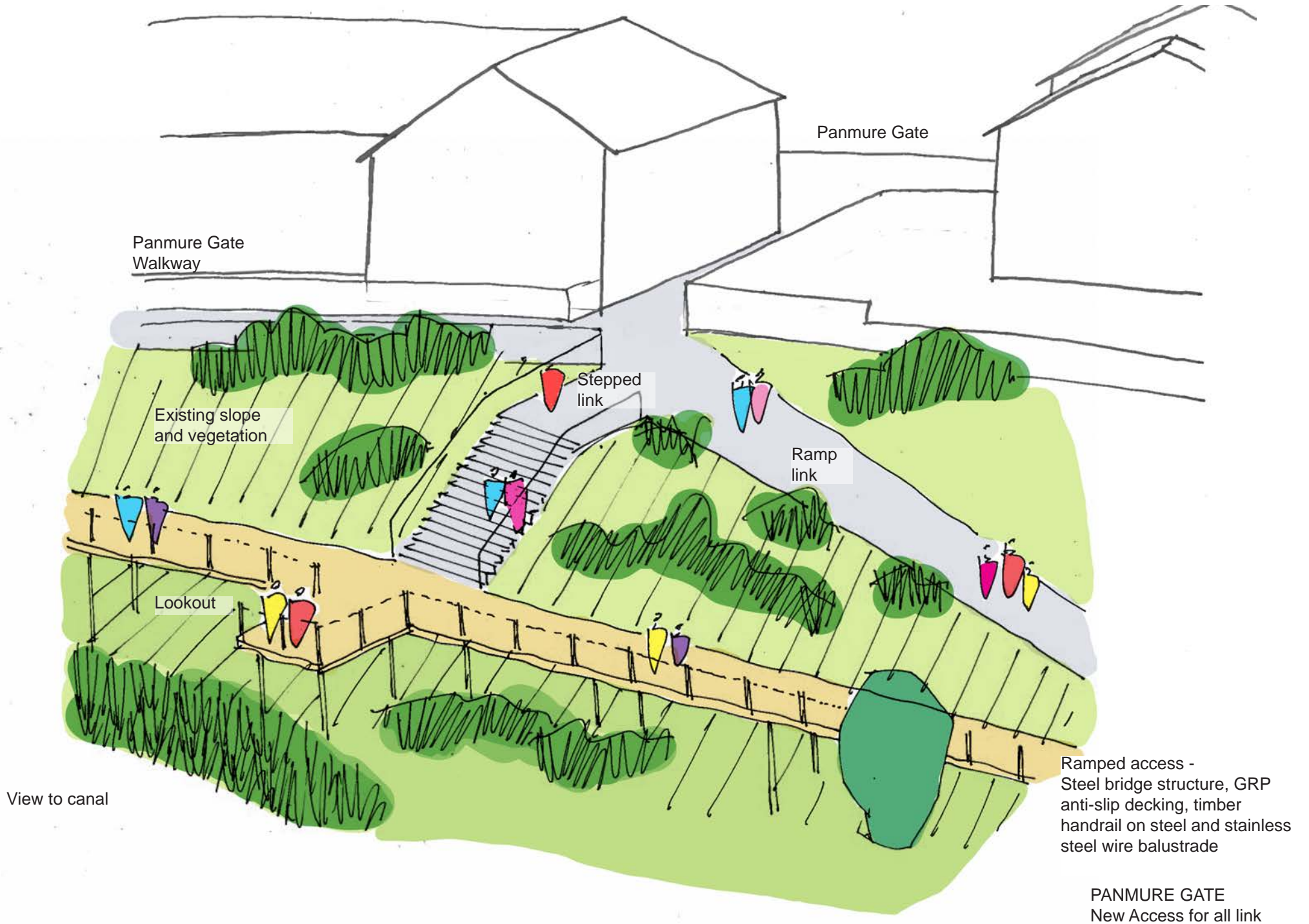


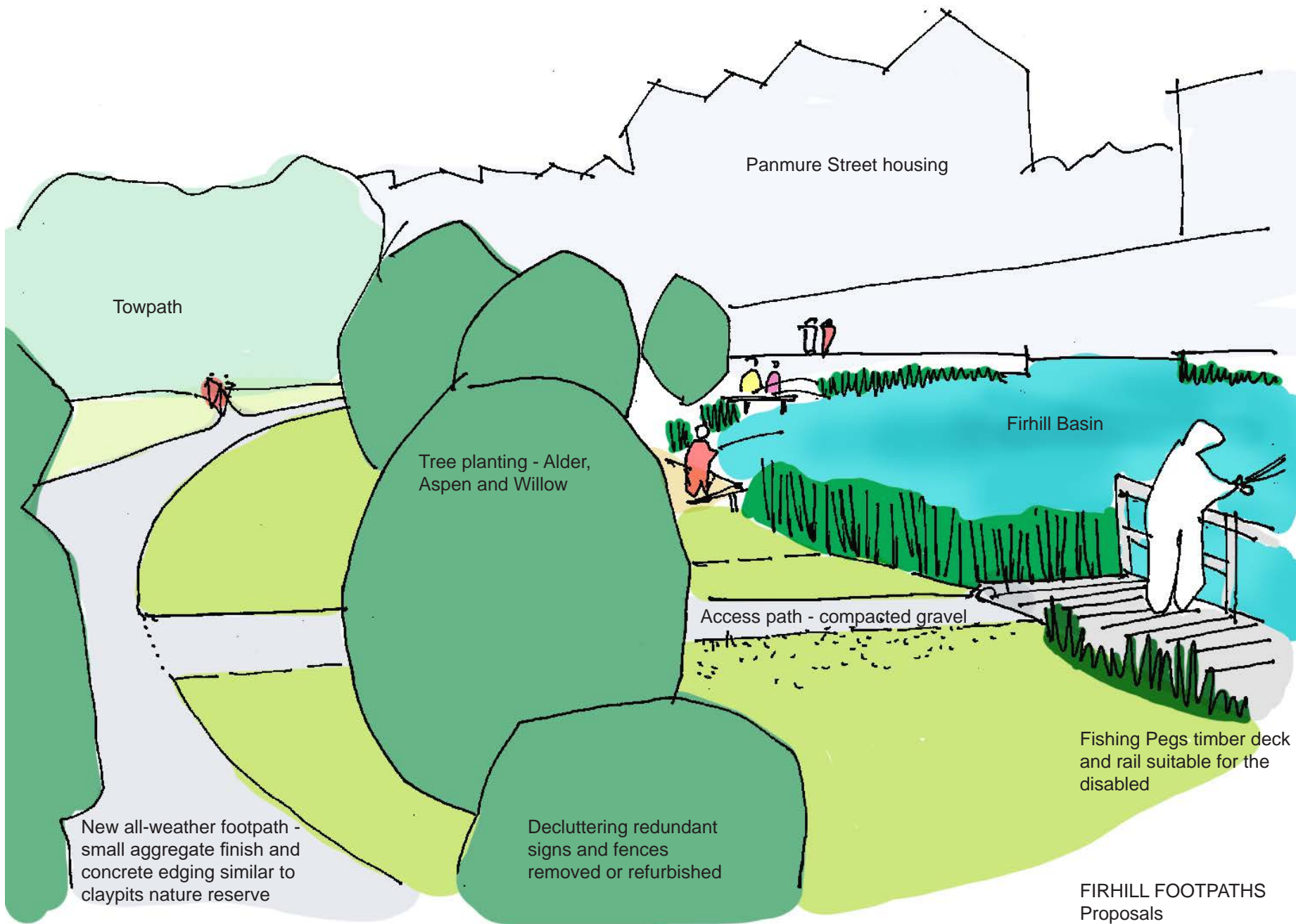


PANMURE GATE  
Existing Condition





FIRHILL FOOTPATHS  
Existing Condition



Panmure Street housing

Towpath

Tree planting - Alder, Aspen and Willow

Firhill Basin

Access path - compacted gravel

Fishing Pegs timber deck and rail suitable for the disabled

New all-weather footpath - small aggregate finish and concrete edging similar to claypits nature reserve

Decluttering redundant signs and fences removed or refurbished

FIRHILL FOOTPATHS Proposals

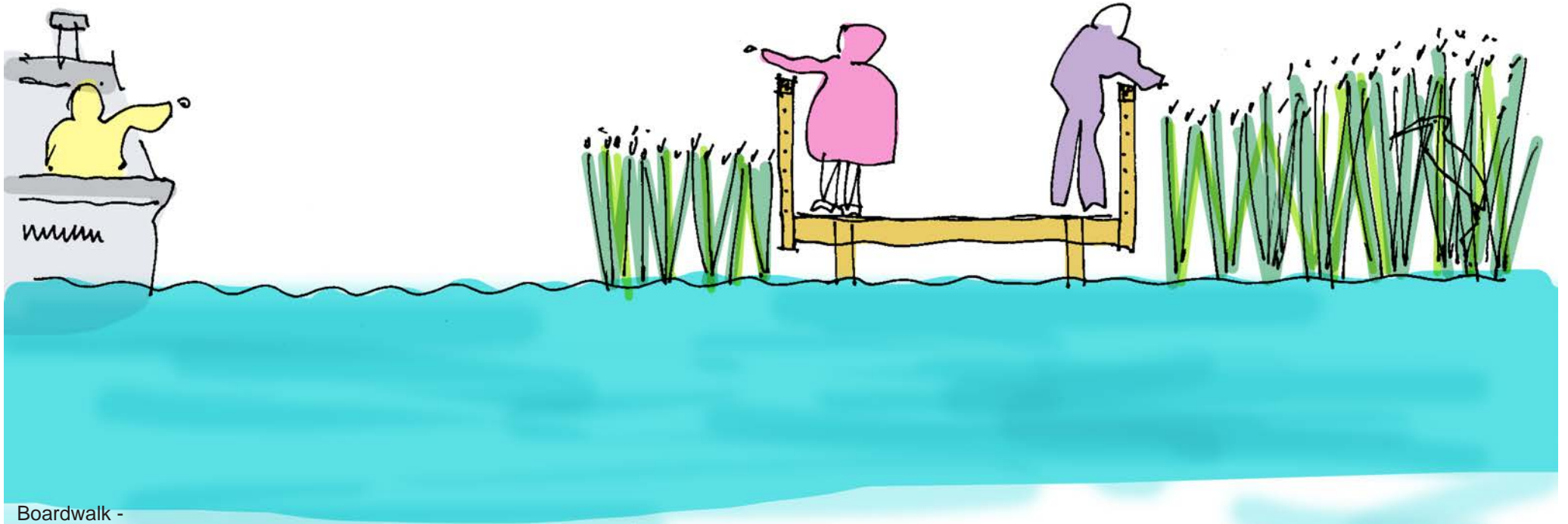


PANMURE BOARDWALK  
Existing Condition

Canal

Boardwalk

Claypits



Boardwalk -  
3m wide hardwood timber structure,  
timber and stainless steel wire  
balustrade 1.4m high, GRP deck.  
Wayfinding/interpretation in  
subsequent phase

PANMURE BOARDWALK