

# Ardrishaig Pier Waste Management Plan



## Introduction

This plan covers Ardrishaig Harbour & Pier only and does not include the Crinan Canal. Ardrishaig Port Authority includes information on Waste facilities available to visiting vessels in this Waste Management Plan and in our 'New User' documents, provided to shipping agents and other vessels wishing to use Ardrishaig Harbour and Pier.

Since 1998 UK legislation has required Ports and Harbours to draw up waste management plans for Maritime and Coastguard Agency approval. The UK requirements have since been updated in accordance with the references which themselves transpose the EU Directive on port waste facilities for ship generated waste. The regulations call for adequate port waste reception facilities that do not cause undue delay to vessels using them. This means that Ardrishaig Harbour and Pier must be capable of receiving types and quantities of prescribed wastes from vessels normally using the harbour, taking into account the operational needs of users, its size and geographical location, the types of vessels calling and any exemptions provided for. Ardrishaig Harbour is recognised as a small harbour and currently does not receive any ship waste.

Ardrishaig Harbour is formed on the shores of Loch Fyne, between the breakwater and lighthouse at the end of the pier and up to the Sea Lock Gates only (see map). It provides good shelter from the majority of weather systems experienced in Argyll, except those winds and swell patterns from the south and up Loch Fyne. It is the only harbour in north Loch Fyne that provides shelter of this type. Therefore is an important bolthole for transiting leisure and commercial craft.

Responsibility for implementation of the waste management plan rests with the Harbour Master in consultation with Scottish Canals (SC) Health & Safety Advisor and (SC) Senior Environmental Scientist.

In creating port waste management plans Scottish Canals has consulted widely with the MCA, West of Scotland Port Security Group, SEPA, Local Council, SC internal departments and external Stakeholders. The consultation included those affected by the provision and use of waste reception facilities at Ardrishaig Harbour. Future consultations will continue within the review period of this plan in order review changing legislation, customer needs and expectations.

In deciding what facilities to provide, Ardrishaig Harbour Authority has undertaken an assessment of quantities and types of waste that might be deposited at Ardrishaig Harbour.

Various commercial shipping vessels use Ardrishaig harbour, transporting road salt, fish food and timber cargos with an average of 1400 tonnes per shipment and each vessel berths on average 20 times per year.

## Legislation

The regulations cited in the references section require Ardrishaig Harbour to prepare, maintain and keep under regular review a “Waste Management Plan”. The plan is to include the provision and use of facilities for the reception of prescribed wastes from ships and other leisure boats using the harbour.

The Maritime & Coast Guard Agency provide guidance on The Merchant Shipping and Fishing Vessels Port Waste Reception Facilities. (MGN563)

The Annexes of MARPOL refers to specific waste categories. Those that affect Ardrishaig Harbour, and the manner in which that waste is dealt with, are contained within this plan.

## The Plan

This plan shows a map of Ardrishaig inner harbour area of responsibility and the waste disposal facilities contained in the secure position within the confines of the Scottish Canals workshop, located at Ardrishaig.

1. Quantities of oil greater than 5 litres (ltrs), but less than 500 ltrs can be disposed of in the Harbour Authority Waste Oil Tank by prior arrangement. The Harbour Authority has a nominated national contractor (Biffa) for the collection and recycling of the waste oil.
  - a. (MARPOL ANNEX I).
  
2. There is no chemical toilet disposal point at Ardrishaig and discharge of sewage is not an occurrence at Ardrishaig Harbour. However if required bulk sewage can be discharged into road tankers supplied by approved contractors only. Vessels should give a minimum of 48 hours’ notice to arrange this facility.
  - a. (MARPOL ANNEX IV).
  
3. A waste collection point for visiting boats is provided as marked on the map. This is for the use of general waste and for the purpose of commercial and leisure crafts. The 1100 litre Euro bin is emptied once weekly (**BIN MARKED NO HOT ASHES**) general waste only.
  
4. All other waste from commercial operators will require a special collection from approved contractors, arranged via the Harbour Master, and a minimum of 24 hours’ notice is required for this service.
  - a. (MARPOL ANNEX V).

5. Recycling facilities for glass bottles and plastics at Ardrishaig harbour are as marked on the map provided within the plan.
6. Under the 'polluter pays' principle, vessels should bear the cost for the provision of Scottish Canals providing special external contractors or agents. Internal provisions and treatment of general waste disposal will not incur any additional charges on top of fees already paid. This supports Scottish Canals Environment policy and Government Strategy to keep our seas clean.
7. Merchant Shipping and Government legislation regulations state that, "All ships, except fishing vessels (of whatever size) must pay the port or terminal a mandatory charge, which makes a significant contribution to the cost of port waste reception facilities, irrespective of the actual use of the facilities". The regulations require that non-exempted vessels provide notification of waste to be discharged to the port reception facilities. The minimal charge for this is factored into pier landing charges.
8. As there is no specific requirement for any further waste reception facilities at Ardrishaig Harbour the cost of any special facility provided on an ad hoc basis is borne in full by the ship and the dues that they pay Scottish Canals. Fishing vessels, small commercial vessels and pleasure vessels must offload their waste are exempted from the requirement to notify or pay a mandatory charge.

The Harbour Master meets regularly with Scottish Canals Health & Safety Advisor and Senior Environmental Scientist to discuss best management of port waste procedures. In addition, the Harbour Master also seeks council from the local MCA.

Marico Marine conduct annual audits on Scottish Canals Harbour, Port and Pier policy and advice accordingly on current legislation.

## **ASSESSMENT OF WASTE DISPOSAL TYPES AND QUANTITIES**

Ardrishaig Harbour receives two regular commercial vessels, which berth on the pier circa 20 visits per annum per vessel:

MV Ayress  
Fri Marlin  
Fri Dolphin  
MV Raba

For the most part, each ship uses its own resources for waste disposal on rare occasions; MV Raba may require to land extremely small amounts of domestic rubbish in the skips provided. This is documented in the Ardrishaig Port Waste Returns Folder to maintain a log and to avoid health and hygiene issues.

Approximately 1500 leisure yachts/motor vessels pass through Ardrishaig Harbour during the summer months between April and October, while transiting the Crinan Canal. This generates approximately 15 bags of general waste a week. The 1100 litre euro bin, which is kept at Ardrishaig Basin located area, holds approximately 15 full bin bags and is therefore considered fit for purpose. This is contracted to Biffa for collection twice per week.

Waste oil can be disposed of at the facility in the Scottish Canals workshop in Ardrishaig. Please contact the main office or duty officer if out of hours to arrange.

There is no demand for sewage waste at present and we do not foresee Scottish canals providing this facility, however this can be provided by arrangement of an external contractor if required and given at least 24 hours' notice and prior arrangement.

- a. [https://assets.publishing.service.gov.uk/government/uploads/system/uploads/attachment\\_data/file/693158/25-year-environment-plan.pdf](https://assets.publishing.service.gov.uk/government/uploads/system/uploads/attachment_data/file/693158/25-year-environment-plan.pdf)

**Main Office Contact 01546 603 210**  
**Duty Officer 07767005880**

## **APPROVED CONTRACTOR**

All Scottish Canals contractors are employed on a fairness and equality basis through a tender process. Our current contractor for waste removal is Biffa, <https://www.biffa.co.uk/>

Biffa Waste Services **01822 860297**

**Services in place for the collection of domestic waste for Harbour and Canal users:**

### **Ardrishaig Basin (PA30 8EP)**

General Waste – 1100 litre euro bin – Service twice weekly (Tuesday/Friday)  
Glass recycling 3 x 240-litre wheelie bins.

### **Scottish Canals workshop (PA30 8EP)**

General Waste – 1100 litre euro bin – Service twice weekly (Tuesday/Friday)  
Waste oil tank 1200 litres

### **Ardrihaig Office (Pier Square) (PA30 8DZ)**

Mixed Recycling Waste – 1 x 1100 litre Euro bin – Service once fortnightly (Monday)  
General Waste – 1 x 240 litre (household size) Euro bin – service once weekly (Thursday)

### **Cairnbaan Boat Park (PA31 8SJ)**

General Waste – 1 x 1100 litre euro bin – Service twice weekly (Monday/Wednesday)

### **Bellanoch Basin (PA31 8SN)**

General Waste – 1 x 1100 litre Euro Bin – Service twice weekly (Monday/Wednesday)  
Mixed Recycling Waste – 1 x 1100 litre Euro bin – Service once fortnightly (Tuesday)

### **Crinan Basin Car Park (PA31 8SW)**

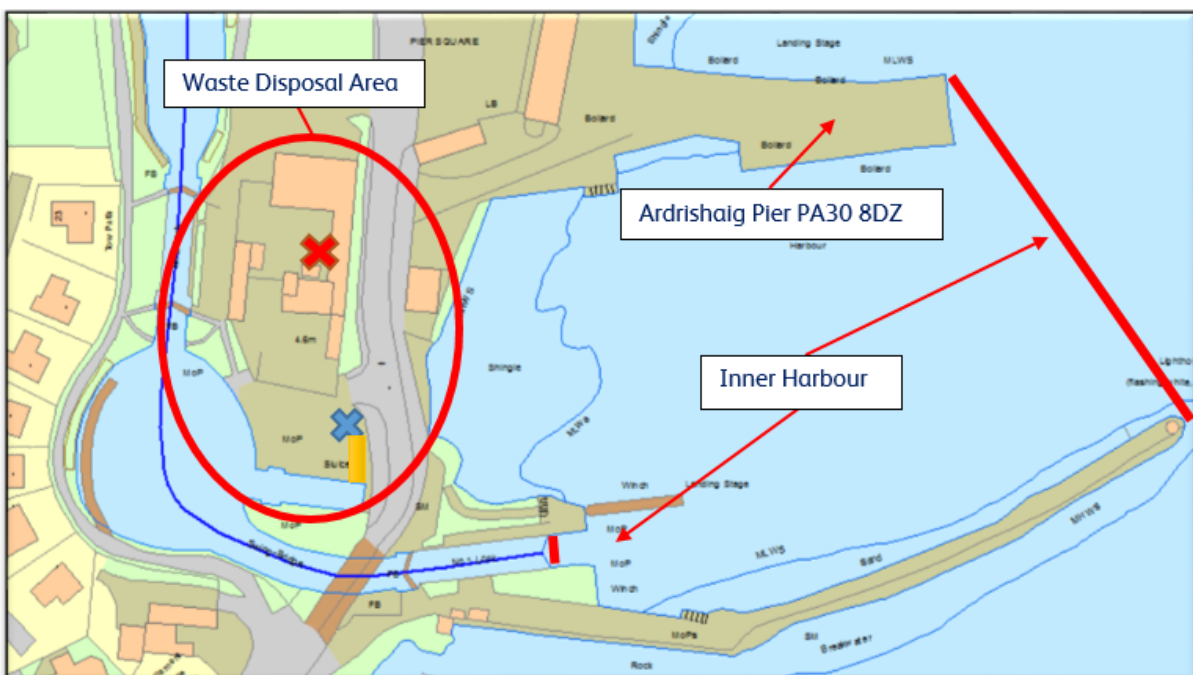
General Waste – 1 x 6.1 metre FEL – Service twice weekly (Monday/Thursday)

### References:

- IMO [http://www.imo.org/en/About/Conventions/ListOfConventions/Pages/International-Convention-for-the-Prevention-of-Pollution-from-Ships-\(MARPOL\).aspx](http://www.imo.org/en/About/Conventions/ListOfConventions/Pages/International-Convention-for-the-Prevention-of-Pollution-from-Ships-(MARPOL).aspx)
- Merchant Shipping 2003  
[https://www.legislation.gov.uk/uksi/2003/1809/pdfs/uksi\\_20031809\\_en.pdf](https://www.legislation.gov.uk/uksi/2003/1809/pdfs/uksi_20031809_en.pdf)
- Merchant Shipping 2009  
[http://www.legislation.gov.uk/uksi/2009/1176/pdfs/uksi\\_20091176\\_en.pdf](http://www.legislation.gov.uk/uksi/2009/1176/pdfs/uksi_20091176_en.pdf)
- Merchant Shipping 2008  
[https://www.legislation.gov.uk/uksi/2008/3257/pdfs/uksi\\_20083257\\_en.pdf](https://www.legislation.gov.uk/uksi/2008/3257/pdfs/uksi_20083257_en.pdf)
- [https://assets.publishing.service.gov.uk/government/uploads/system/uploads/attachment\\_data/file/440751/MGN\\_387.pdf](https://assets.publishing.service.gov.uk/government/uploads/system/uploads/attachment_data/file/440751/MGN_387.pdf)
- Guidance on Merchant Shipping 2003  
[https://assets.publishing.service.gov.uk/government/uploads/system/uploads/attachment\\_data/file/440751/MGN\\_387.pdf](https://assets.publishing.service.gov.uk/government/uploads/system/uploads/attachment_data/file/440751/MGN_387.pdf)  
[https://assets.publishing.service.gov.uk/government/uploads/system/uploads/attachment\\_data/file/608427/MGN\\_563\\_rev\\_1.pdf](https://assets.publishing.service.gov.uk/government/uploads/system/uploads/attachment_data/file/608427/MGN_563_rev_1.pdf)
- SEPA

<https://www.sepa.org.uk/environment/waste/zero-waste/>

- Environmental Protection Act 1990  
[https://www.legislation.gov.uk/ukpga/1990/43/pdfs/ukpga\\_19900043\\_en.pdf](https://www.legislation.gov.uk/ukpga/1990/43/pdfs/ukpga_19900043_en.pdf)
- Environmental Protection Duty of Care 2014  
[http://www.legislation.gov.uk/ssi/2014/4/pdfs/ssi\\_20140004\\_en.pdf](http://www.legislation.gov.uk/ssi/2014/4/pdfs/ssi_20140004_en.pdf)
- Crinan Canal Byelaws 1929  
<https://www.scottishcanals.co.uk/>



This identifies the area in Ardrishaig Basin where the 1100 litre euro bin domestic refuse collection point is situated.

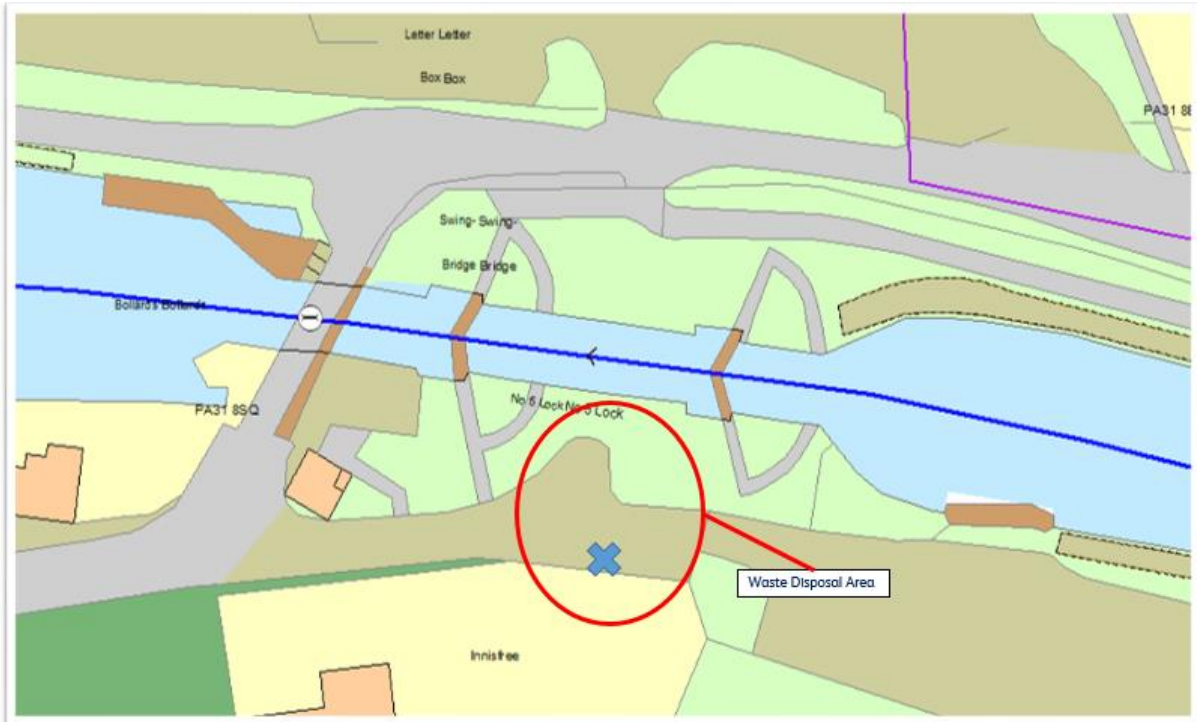


This identifies the area in Ardrishaig Basin where recycling facilities for glass bottles.

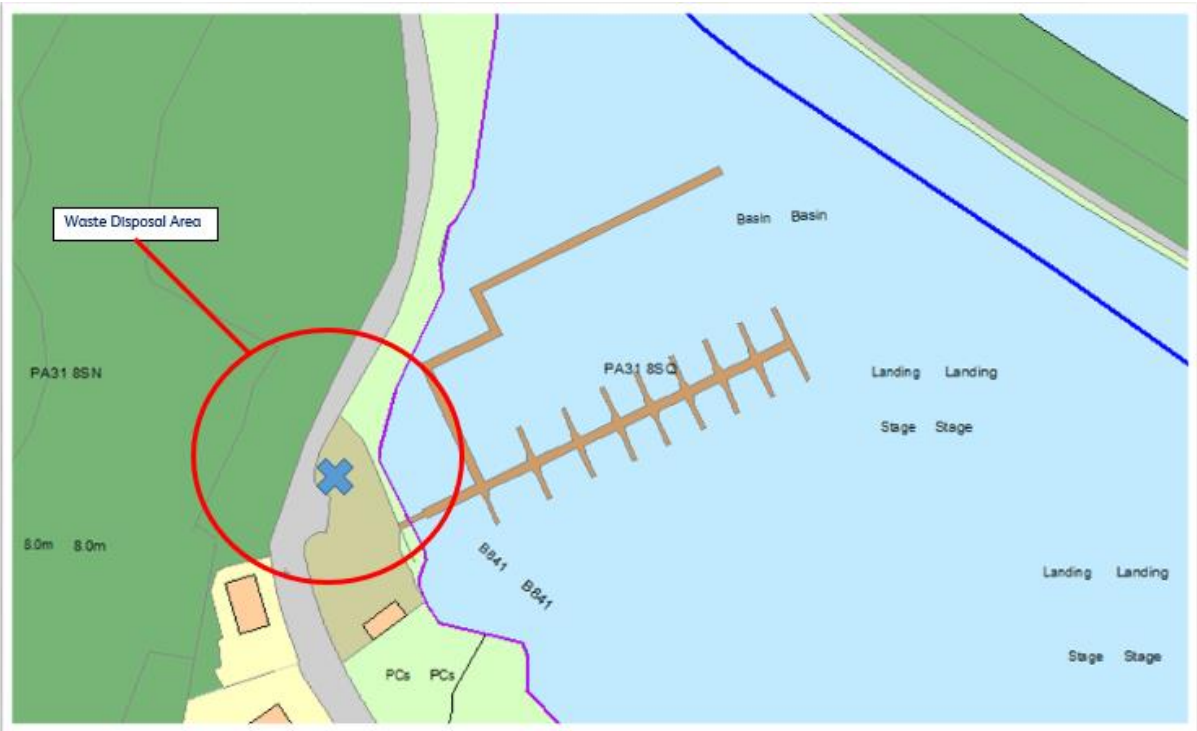


This identifies the area in the Scottish Canals Ardrishaig workshop where the 1200 litre Waste Oil Tank is situated.

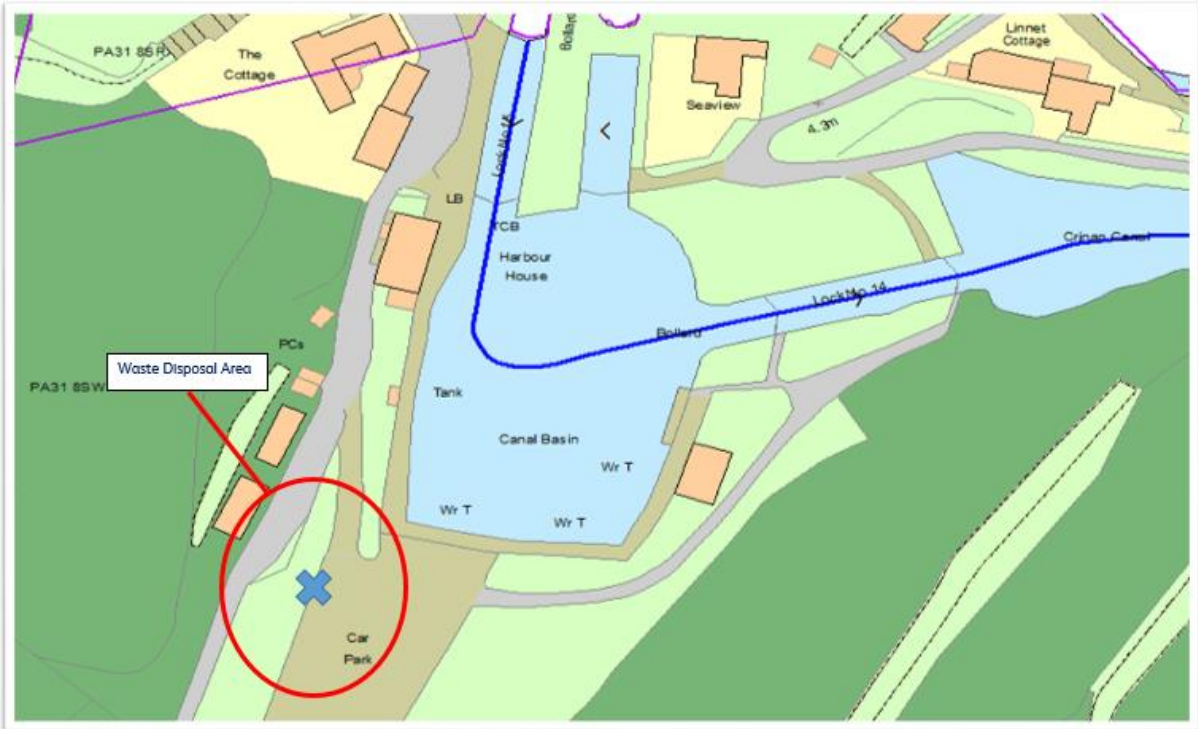




✕ This identifies the area where the domestic refuse collection point is situated.







✘ This identifies the area where the domestic refuse collection point is situated.